



\$ 506,490

SOHO

<https://cadencenv.com>

The SoHo in Piermont by Woodside Homes features 2,020 square feet of living space. This stunning 3 bedroom, 2.5 bath home offers comfort and serenity the moment you step inside. Thoughtfully designed to maximize natural lighting in the spacious living areas. Express your culinary creativity in the well-appointed kitchen with...

- 3 beds
- 2.5 baths
- WOODSIDE HOMES
- 2020 sq ft



BASIC FACTS

Property ID: 16345

Bathrooms: 2.5

Area: 2020 sq ft

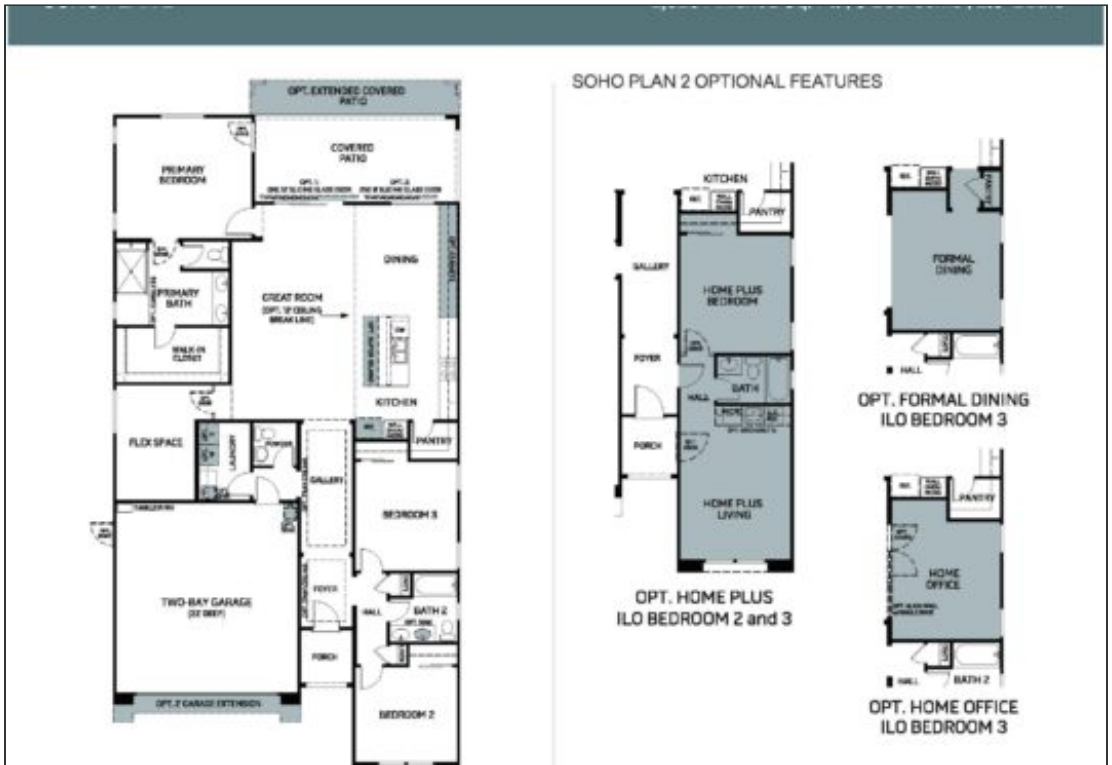
Builder: WOODSIDE HOMES

Bedrooms: 3

Floors: 1

Garage Bays: 2

FLOOR PLANS



Floor Plan 1



SOHO PLAN 2 OPTIONAL FEATURES



OPT. EXTENDED CLOSET
w/STORAGE/WORK AREA
ILO FLEX



OPT. PRIMARY RETREAT
ILO FLEX



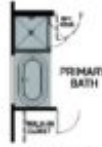
OPT. EXTENDED STORAGE/
WORKSHOP ILO FLEX



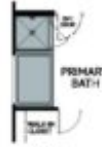
OPT. SUPER CLOSET
ILO FLEX



OPT. FULL WALL
AT SHOWER



OPT. FREE
STANDING TUB



OPT.
DROP-IN TUB

Woodside Homes reserves the right to change floor plans, features, elevations, prices, materials and specifications without notice. All square footages and

Floor Plan 2

