



\$ 457,990

PLAN 1865

<https://cadencenv.com>

Plan 1865 in Symmetry Bay by D.R. Horton offers 1,865 square feet of living space. This two-story home offers four bedrooms with an option for a fifth bedroom, 2.5 baths, and a two-car garage. Homes start at \$457,990.

- 5 beds
- 2.5 baths
- DR HORTON
- 1865 sq ft



BASIC FACTS

Property ID: 16277

Bathrooms: 2.5

Area: 1865 sq ft

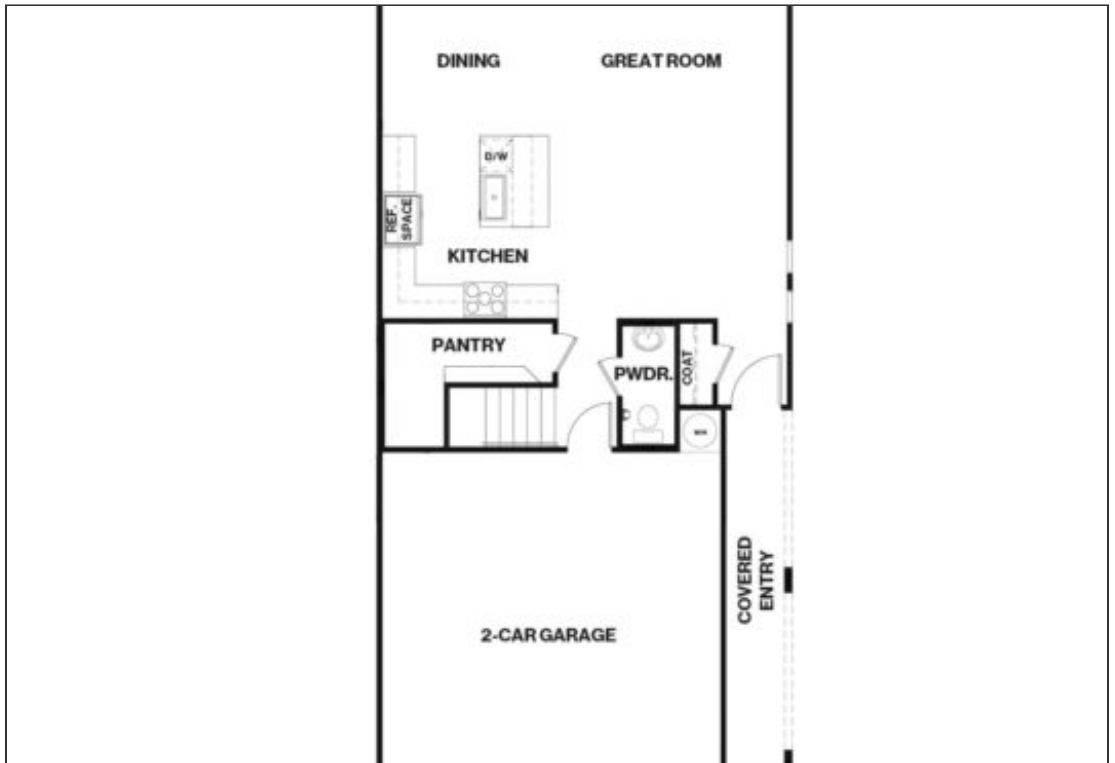
Square Footage: 1865 sq ft

Bedrooms: 5

Floors: 2

Garage Bays: 2

FLOOR PLANS



Floor Plan 1





Floor Plan 2

