



\$ 577,865

MATEO - QUICK MOVE-IN

<https://cadencenv.com>

This Mateo plan (lot 13) in Serenata by Woodside Homes features 2,631 square feet of living space. Step inside and be greeted by a versatile flex space that can be customized to suit your needs. Whether you envision a home office, a playroom, or a cozy reading nook, this space...

- 3 beds
- 2.5 baths
- WOODSIDE HOMES
- 2631 sq ft



BASIC FACTS

Property ID: 21797

Bathrooms: 2.5

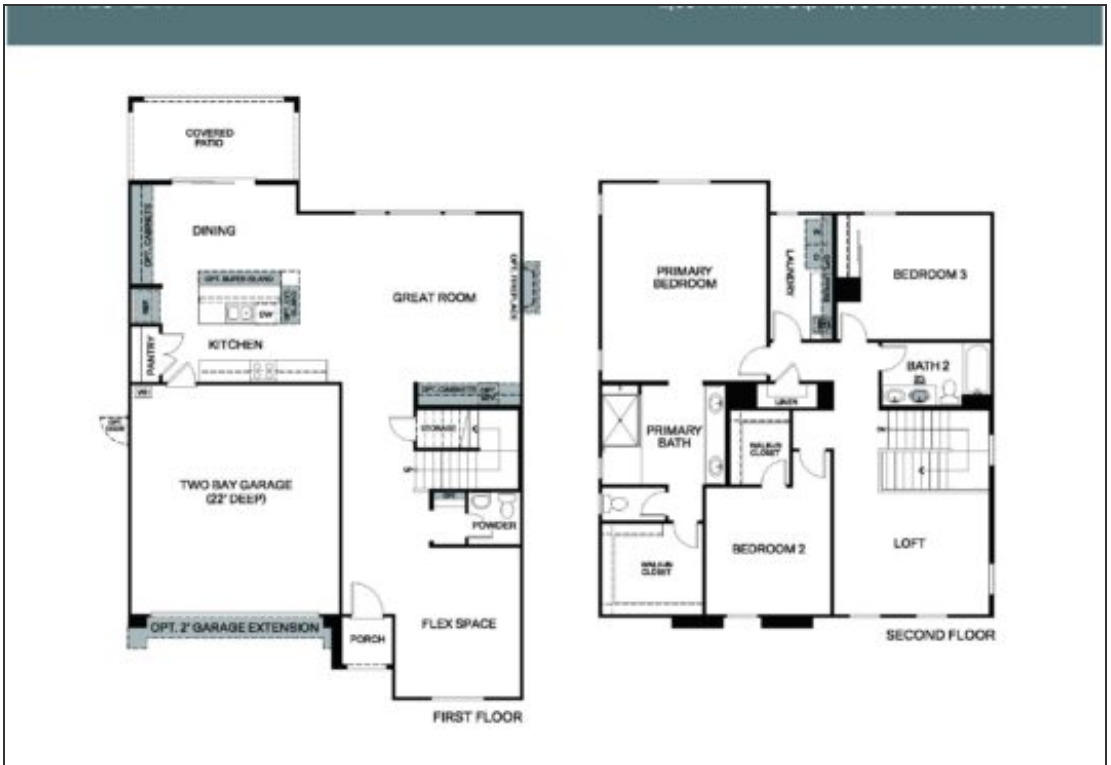
Area: 2631 sq ft

Bedrooms: 3

Floors: 2

Garage Bays: 2

FLOOR PLANS



Floor Plan 1



MATEO PLAN 1 OPTIONAL FEATURES



OPT. DECK AT
PRIMARY BEDROOM



OPT. HOME PLUS SUITE I.L.O LOFT



OPT. BEDROOM 4 w/BATH 4
I.L.O FLEX & POWDER



OPT. ALTERNATE
LAUNDRY
(TO ACCOMMODATE
OPT. STACKED W/D)



OPT. FREE
STANDING TUB



OPT. DROP-IN TUB



Woodside Homes reserves the right to change floor plans, features, elevations, prices, materials and specifications without notice. All square footages and



Floor Plan 2

