



\$ 579,990

## MARLOWE

<https://cadencenv.com>

This 2,829 square foot Marlowe plan in Adair by Woodside Homes is a two-story home featuring 3 to 5 bedrooms and 2.5 to 4 baths, ensuring ample space for your family's needs. With a 2-car garage, your vehicles will have a secure and convenient home too. Step inside to discover...

- 5 beds
- 4 baths
- WOODSIDE HOMES
- 2829 sq ft



BASIC FACTS

Property ID: 20132

Bathrooms: 4

Area: 2829 sq ft

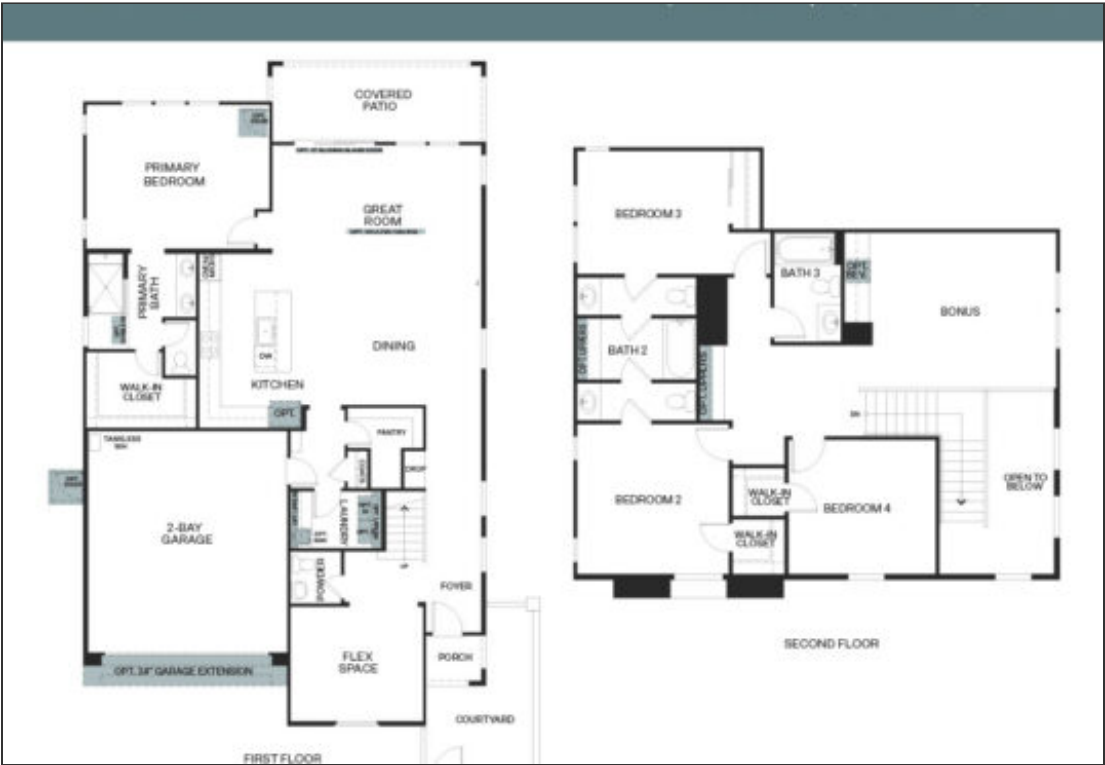
Square Footage: 2829 sq ft

Bedrooms: 5

Floors: 2

Garage Bays: 2

FLOOR PLANS



Floor Plan 1

