

\$ 624,777

## MARLOWE - QUICK MOVE-IN

<https://cadencenv.com>

This Marlowe plan (lot 32) in Adair by Woodside Homes features 2,829 square feet. A flexible space at the entry area welcomes you, adaptable to your needs, be it a cozy reading nook or a creative workspace. The drop zone provides a convenient spot to organize daily essentials, keeping your...

- 4 beds
- 3.5 baths
- WOODSIDE HOMES
- 2829 sq ft



# BASIC FACTS

Property ID: 24018

Bathrooms: 3.5

Area: 2829 sq ft

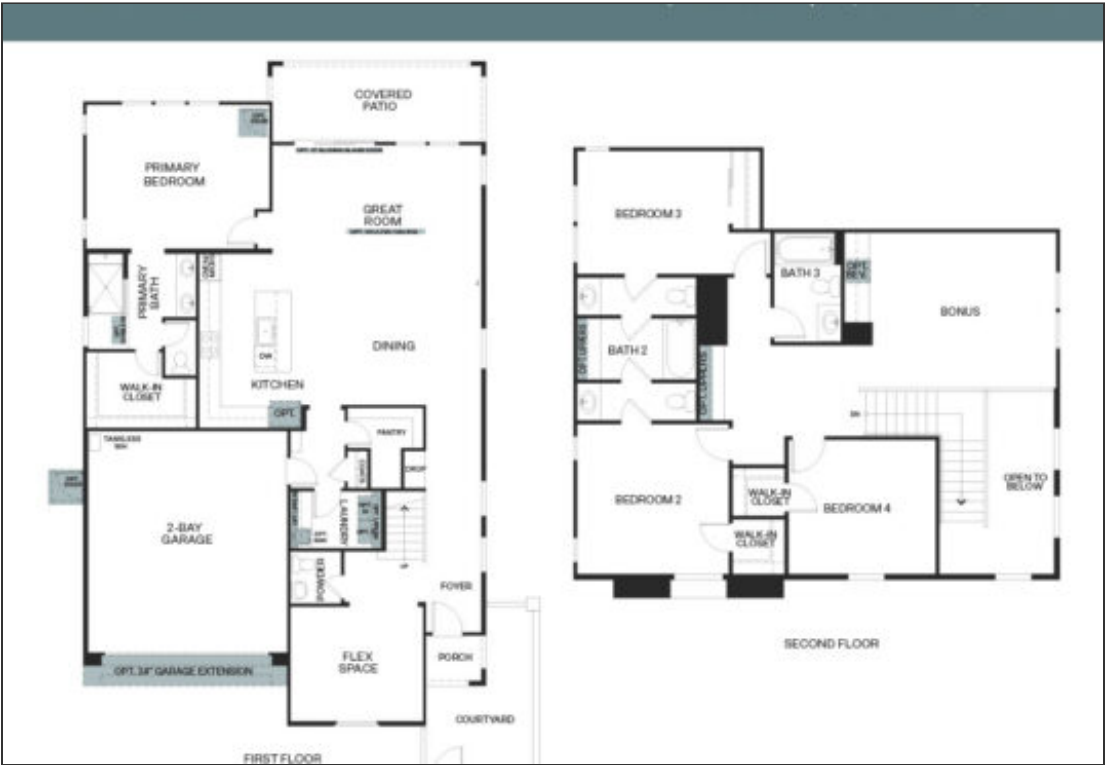
Square Footage: 2829 sq ft

Bedrooms: 4

Floors: 2

Garage Bays: 2

# FLOOR PLANS



Floor Plan 1

