



\$ 594,995

LAYTON

<https://cadencenv.com>

The 2,406-square-foot Layton's welcoming porch and inviting foyer flow into the beautiful dining room, offering views to the spacious great room and desirable covered patio beyond. The well-designed kitchen overlooks a bright casual dining area, and is complete with a large center island with breakfast bar, plenty of counter and...

- 4 beds
- 3 baths
- TOLL BROTHERS
- 2411 sq ft



BASIC FACTS

Property ID: 7199

Bathrooms: 3

Area: 2411 sq ft

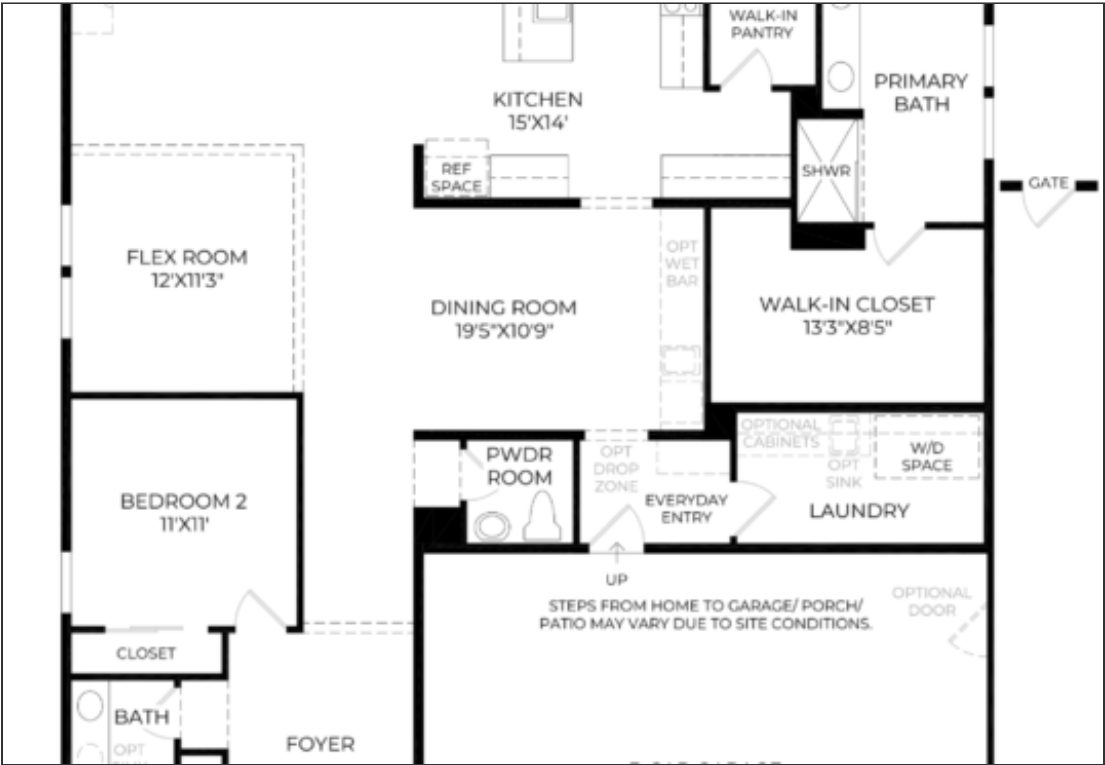
Square Footage: 2411 sq ft

Bedrooms: 4

Floors: 1

Garage Bays: 3

FLOOR PLANS



Floor Plan 1

