



\$ 594,990

EMERY

<https://cadencenv.com>

This stunning 2,935 square foot two-story home in Adair by Woodside Homes accommodates 4-5 spacious bedrooms, 3.5 to 4.5 luxurious bathrooms, and a generous 3-car garage, ensuring ample space for your family and vehicles. Step inside to discover an expansive great room and kitchen with a dedicated Work+ Space, perfect...

- 4 beds
- 4.5 baths
- WOODSIDE HOMES
- 2935 sq ft



BASIC FACTS

Property ID: 20136

Bathrooms: 4.5

Area: 2935 sq ft

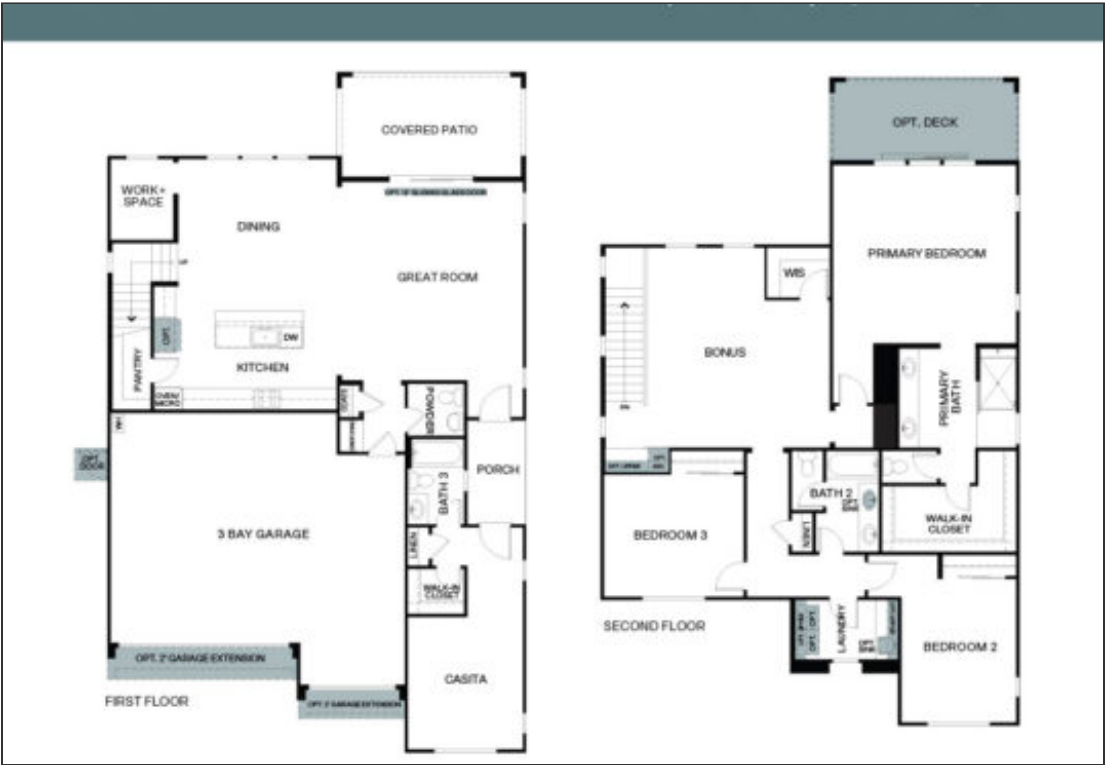
Square Footage: 2935 sq ft

Bedrooms: 4

Floors: 2

Garage Bays: 3

FLOOR PLANS



Floor Plan 1

