



\$ 587,933

## CHELSEA - QUICK MOVE-IN

<https://cadencenv.com>

This Chelsea plan (lot 39) in Piermont by Woodside Homes features 1,788 square feet of living space. This luxurious and thoughtfully designed 2-bedroom, 2.5-bathroom haven with a 2-car garage and additional storage has all the modern comforts you desire. The open-concept living space seamlessly blends the kitchen, dining, and living...

- 2 beds
- 2.5 baths
- WOODSIDE HOMES
- 1788 sq ft



# BASIC FACTS

Property ID: 20616

Bathrooms: 2.5

Area: 1788 sq ft

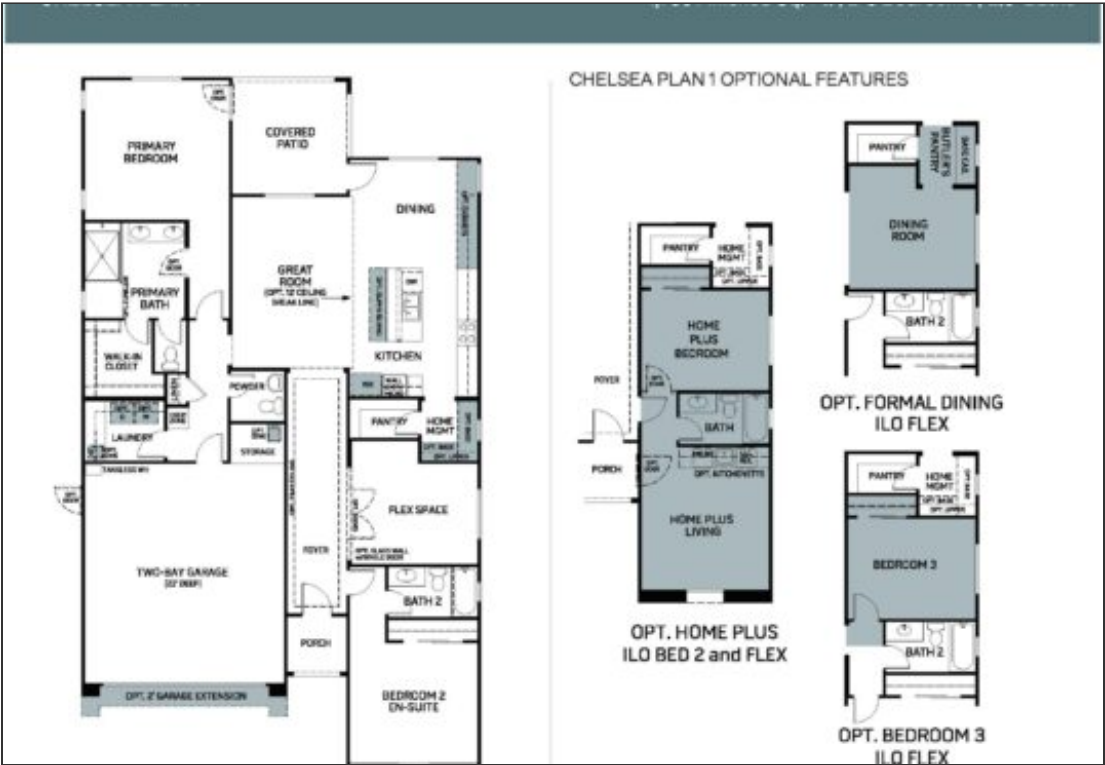
Square Footage: 1788 sq ft

Bedrooms: 2

Floors: 1

Garage Bays: 2

# FLOOR PLANS



Floor Plan 1

